

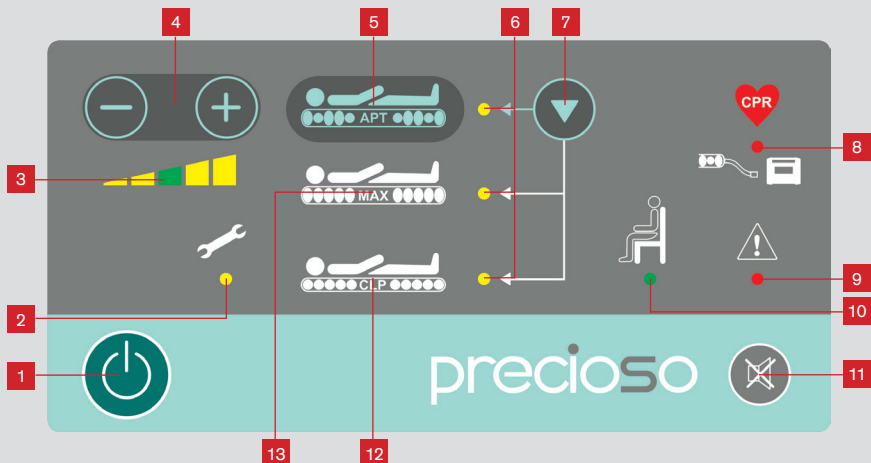
QUICK REFERENCE GUIDE

PRECIOSO Series 2

Mattress Replacement or Overlay System



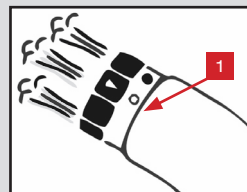
SCU (SYSTEM CONTROL UNIT)



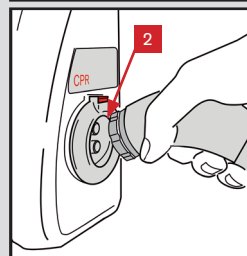
1. Activation GO Button
2. Service Due Indicator
3. Pressure Level Indicator
4. Pressure Control Buttons
5. Alternating Pressure Therapy Mode
6. Mode Indicators
7. Mode Selection Button
8. CPR/Air Connector Open Indicator
9. System Error Indicator
10. Seat Mode Indicator
11. Audio Mute Button
12. Constant Low Pressure Mode
13. Max Inflate Mode

CONNECTING MATTRESS TO SCU

Connect mattress to SCU as follows:



- Air connector must be in Open Mode (1)
- Push connector down at an angle of approximately 45° until it clicks into place (2)
- To activate CPR reverse the process



LINET UK, LINET House 17 Murrills Estate,
Portchester, Hampshire, PO16 9RD
Tel.: 0844 248 1833, Fax: 0844 499 4409
e-mail: info@linet.uk.com, www.linet.uk.com

QUICK REFERENCE GUIDE

9200-0489_01



PRECIOSO Series 2

Mattress Replacement or Overlay System

THERAPY MODES



Alternating Pressure Therapy

Alternating Pressure Therapy (Default mode) simulates the natural movement of a patient and thereby helping prevent and treat pressure ulcers. The cells inflate and deflate in 7.5 minute cycles and simulates the body's normal response to pressure for natural protection.



Max Inflate

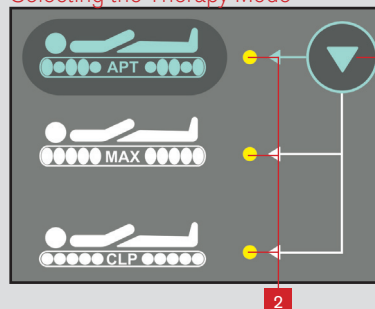
Max inflate mode provides firm and stable support for patient care. After 30 minutes it automatically switches to the alternating mode to prevent the risk of pressure ulcers.



Constant Low Pressure

Constant low pressure mode automatically maintains the selected pressure regardless of changes in the patient's weight distribution or position to achieve constant levels of pressure redistribution.

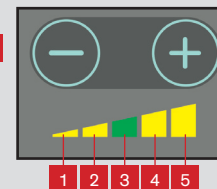
Selecting the Therapy Mode



Select mode as follows:

- Activate the keyboard by pressing the Activation GO Button
- Press Mode Selection Button (1) once or repeatedly until desired mode indicator (2) flashes yellow
- Once the pre-set pressure is reached, mode indicator (2) will remain lit

Selecting the Pressure Level



The pressure control allows the nursing staff to adjust the pressure within a pre-set range in APT and CLP mode.

To adjust pressure:

- Press button - to decrease pressure
- Press button + to increase pressure

Always read user manual!

The weight levels indicated are merely recommendations. Which pressure level is best suited for a patient depends on factors such as weight, weight distribution and personal comfort.

