

指纹锁 FINGERPRINT LOCK



Fingerprint



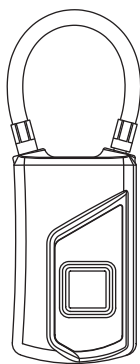
1 Years



Waterproof IP66



Security



I .USB Interface:

The product is charged by USB.
Please fully charge the product for the first time.



Components:

- 1.USB Port
- 2.Fingerprint Reader
- 3.LED Light
- 4.Wire Rope

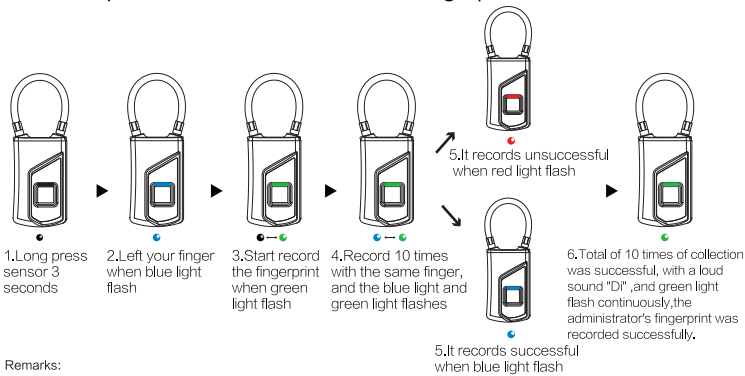
II .Indicator

Use 3-color indicator. Different indicator represents different devices and status.

Please check the details as below chart:

Indicator status	Function
Low power	Red light flash
Charging	Red light always on
Full charged	Lights off
Green light flash	Fingerprint collection mode
Green light always on	Successful to collect fingerprint
Blue light always on	Administrator fingerprint authorization
Green light flash	Unlocked successfully
Red light always on	Delete fingerprint mode
Red light flash	Failed to collect fingerprint

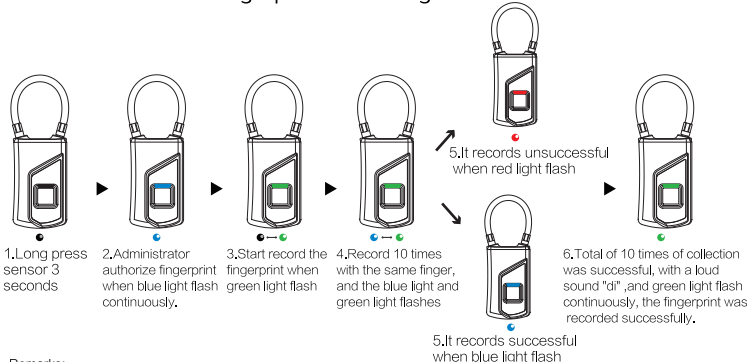
III .Description Of First Administrator' s Fingerprint Record



Remarks:

- 1.Please pull out the lock rope manually after the fingerprint is unlocked successfully.
- 2.Please insert and press the lock rope when intend to lock.

IV .Number 2 to 10 Fingerprint Recording Instructions



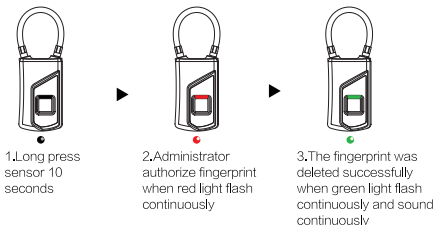
Remarks:

1. The first and second fingerprints are the administrator fingerprint by default.
2. Collecting the second to tenth fingerprints requires administrator fingerprint authorization.

V .Description Of Delete Fingerprint

VI .Specifications

Support 360 degree angel fingerprint recognize
Resolution: 508DPI
ESD: +/-12kV air, +/-8kV contact
FRR: <1%
FAR: <0.002%
Recognize time: <300mS
Battery: 3.7V 240mAh(Unlock:1000 times)
Standby time: 1 Year
Charger: 5V 1A



Remarks:

Only the administrator can delete the fingerprint and delete all the fingerprints at once.

VII .Low voltage

When the voltage $\leq 3.5V$, the red indicator flash fast for 15s. If keep in the status of low batter, it will alarming per minute.

一、USB接口:

设备通过数据线连接USB进行充电。
(首次使用请先给设备充满电。)



部件识别:

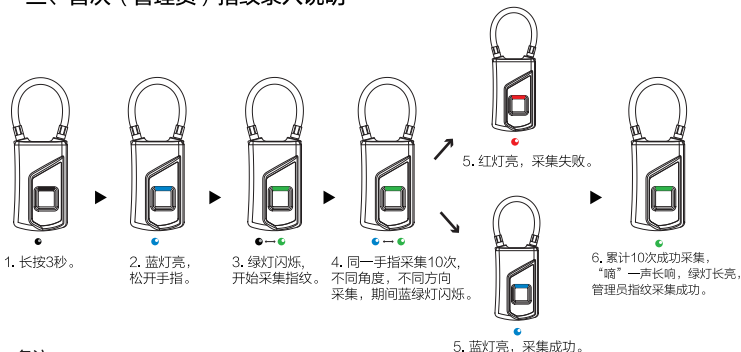
- 1.USB接口 2.指纹采集器
3.LED指示灯 4.锁绳

二、指示灯

采用3色指示灯,指示灯不同颜色,不同状态代表设备不同状态。详情见下表:

状态	指示灯状态
电量低	红灯闪烁
充电中	红灯长亮
充满电	灯灭
绿灯闪烁	指纹采集模式
绿灯长亮	指纹采集成功
蓝灯长亮	管理员指纹授权
绿灯闪烁	解锁成功
红灯长亮	清除所有指纹模式
红灯闪烁	指纹采集失败

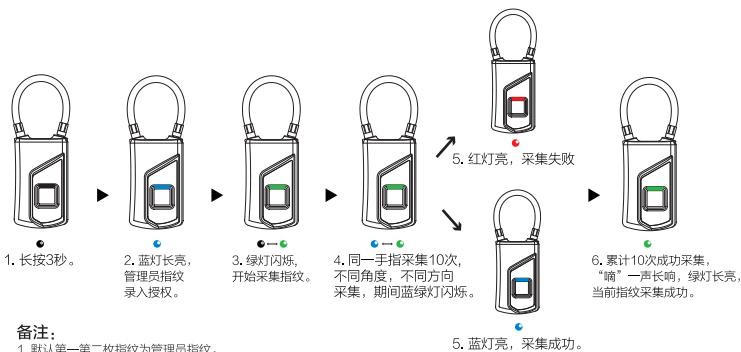
三、首次(管理员)指纹录入说明



备注:

1. 指纹解锁成功, 需手动拔出锁绳。
2. 上锁时, 需手动插入锁绳按压。

四、第二个到第十个指纹录入说明



备注:

1. 默认第一枚指纹为管理员指纹。
2. 采集第二到第十枚指纹需要管理员指纹授权。

五、删除指纹说明



备注:

只有管理员才能删除指纹, 并且是一次性删除全部指纹。

六、规格参数

支持360°任意方向按压式指纹识别;
分辨率508DPI;
指纹容量: 10组指纹
ESD: +/-12kV空气, +/-8kV接触;
FRR: <1%;
FAR: <0.002%;
识别时间: <300mS;
电池容量: 3.7V 240mAh (开锁1000次)
待机时间: 1年
充电电压: 5V 1A

七、低压

当电压等于或低于 3.5V 时红色指示灯会快闪 15 秒; 如一直处于低电状态, 每隔一分钟, 就报警一次。