

PV-142, PV-162, PV-182.

Thin fire hydrant cabinet, surface-mounted



Description

Basic model fire hydrant cabinets are manufactured from 1,25 mm steel and the reels are made from 1 mm galvanized steel. The cabinet has a welded back wall that strengthens the structure and a reinforced door. The doors open 180 degrees.

Thin model is ideal for cramped spaces, for example a narrow hallway.

Standard

Manufactured according to EN 671-1 standard specifications.

Surface finish

Epoxy powder-coated

Standard colours:

- grey (RAL 7040)
- white (RAL 9016)
- red (RAL 3020)

Hoses

1. Fabric surface polyester/EPDM lightweight hose. Fulfils EN 694:2001 standard.

Operating pressure: 1,2 MPa
Burst pressure: 9 MPa

2. Nitrile/PVC fire hydrant hose reinforced with polyester webbing. Fulfills EN 694:2001 Type A Class 2 standard.

Operating pressure: 1,2 MPa

Burst pressure: 4 MPa

The hose assembly is equipped with a spray nozzle.

Reel

The reels are painted red. The hub of the reel is made from a special pressure-tested brass casting. The reel is equipped with a spring-reinforced feed hose, a spray nozzle and a 1" shut off valve.

Lock

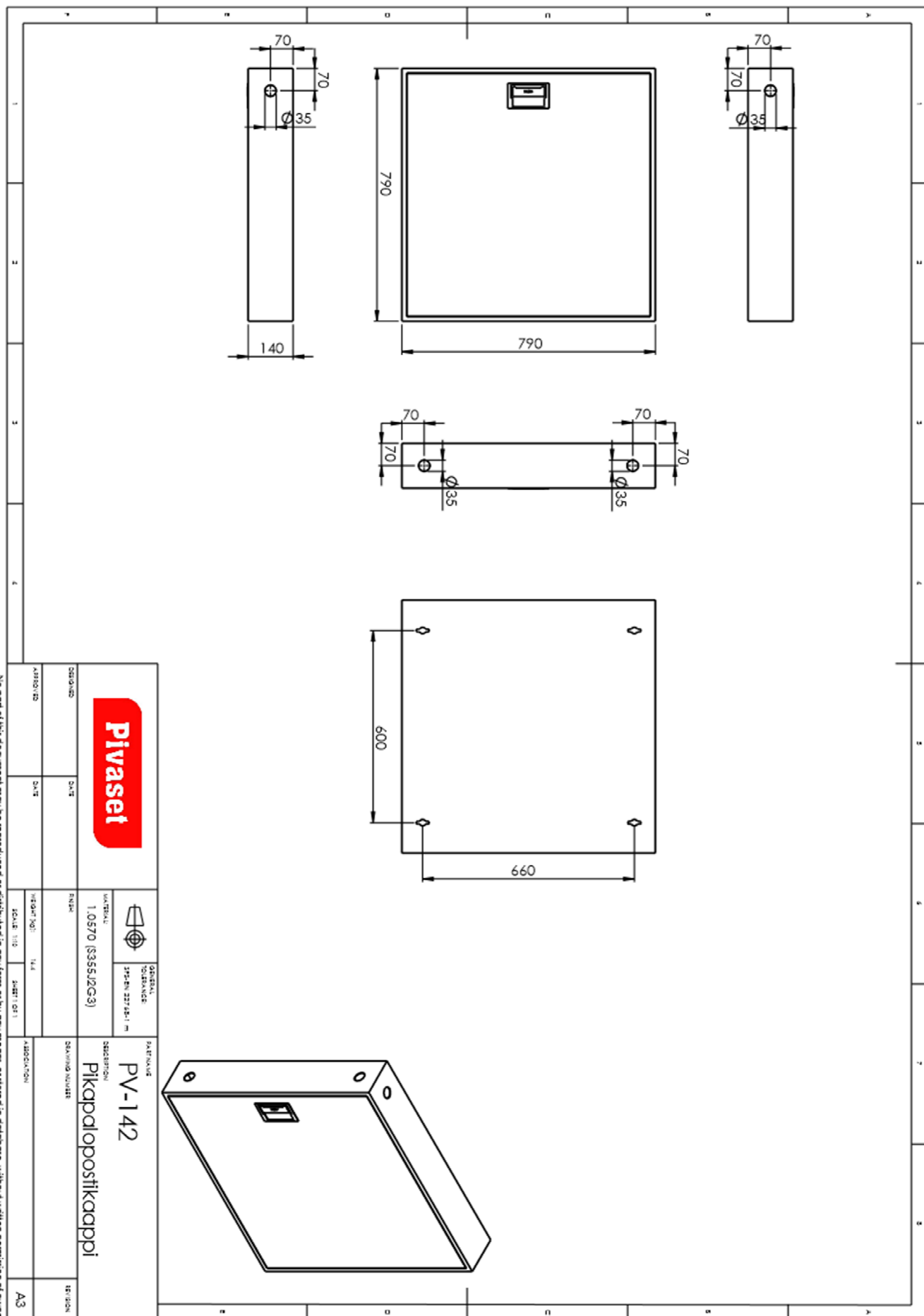
The door is equipped with a special lock that is shielded by a breakable protective glass (picture on the right).

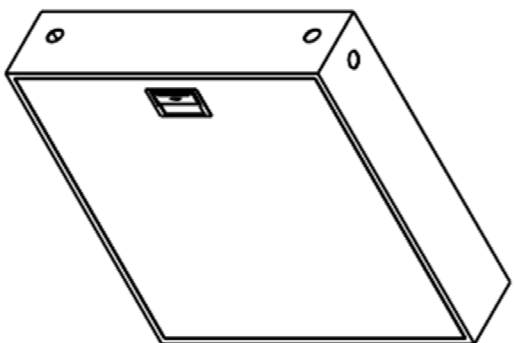
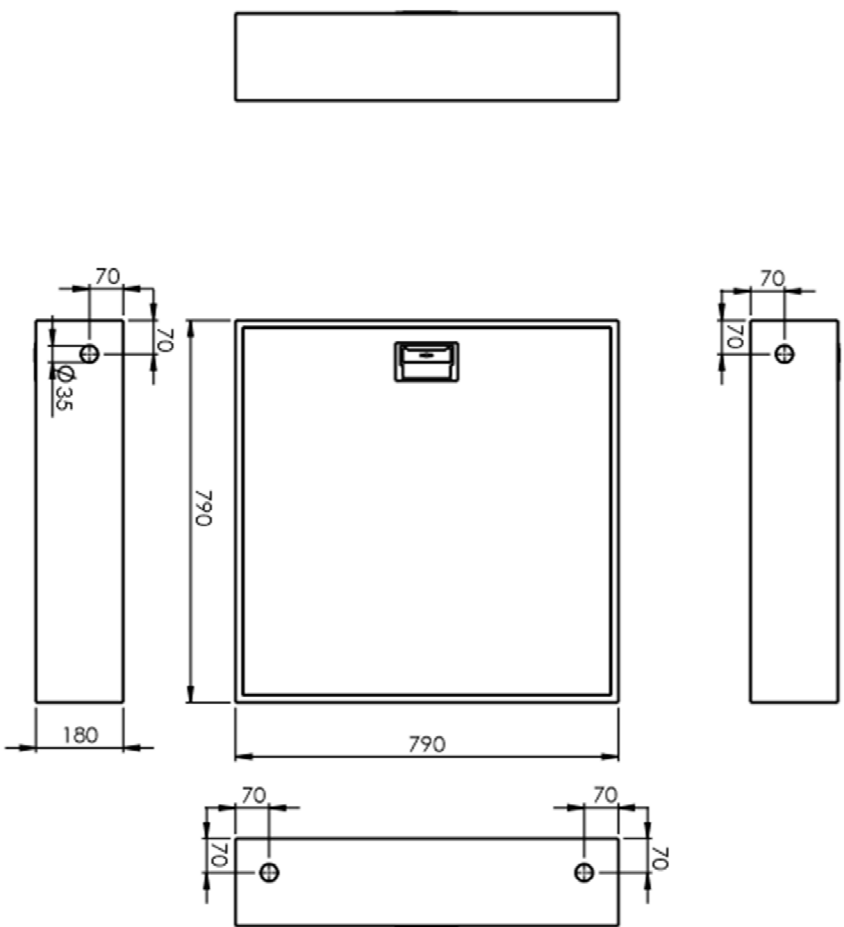


Hose size alternatives

| Code | Model | Size | Depth | Colour |
|-------------|--------------|-------------|--------------|---------------|
| 2953372 | PV-142 | 19 mm/15 m | 140 mm | harmaa |
| 2953374 | PV-142 | 19 mm/20 m | 140 mm | harmaa |
| 2953376 | PV-142 | 19 mm/25 m | 140 mm | harmaa |
| 2953301 | PV-142 | 19 mm/30 m | 140 mm | harmaa |
| 2953378 | PV-142 | 25 mm/15 m | 140 mm | harmaa |
| 2953303 | PV-142 | 25 mm/20 m | 140 mm | harmaa |
| 2953352 | PV-162 | 19 mm/20 m | 160 mm | harmaa |
| 2953354 | PV-162 | 19 mm/25 m | 160 mm | harmaa |
| 2953356 | PV-162 | 19 mm/30 m | 160 mm | harmaa |
| 2953358 | PV-162 | 25 mm/20 m | 160 mm | harmaa |
| 2953309 | PV-162 | 25 mm/25 m | 160 mm | harmaa |
| 2953322 | PV-182 | 19 mm/20 m | 180 mm | harmaa |
| 2953324 | PV-182 | 19 mm/25 m | 180 mm | harmaa |
| 2953326 | PV-182 | 19 mm/30 m | 180 mm | harmaa |
| 2953328 | PV-182 | 25 mm/25 m | 180 mm | harmaa |
| 2953330 | PV-182 | 25 mm/30 m | 180 mm | harmaa |
| 2953652 | PV-142 | 19 mm/15 m | 140 mm | valkoinen |
| 2953653 | PV-142 | 19 mm/20 m | 140 mm | valkoinen |
| 2953654 | PV-142 | 19 mm/25 m | 140 mm | valkoinen |
| 2953305 | PV-142 | 19 mm/30 m | 140 mm | valkoinen |
| 2953656 | PV-142 | 25 mm/15 m | 140 mm | valkoinen |
| 2953305 | PV-142 | 25 mm/20 m | 140 mm | valkoinen |
| 2953662 | PV-162 | 19 mm/20 m | 160 mm | valkoinen |
| 2953663 | PV-162 | 19 mm/25 m | 160 mm | valkoinen |
| 2953664 | PV-162 | 19 mm/30 m | 160 mm | valkoinen |
| 2953666 | PV-162 | 25 mm/20 m | 160 mm | valkoinen |
| 2953672 | PV-182 | 19 mm/20 m | 180 mm | valkoinen |
| 2953673 | PV-182 | 19 mm/25 m | 180 mm | valkoinen |
| 2953674 | PV-182 | 19 mm/30 m | 180 mm | valkoinen |
| 2953676 | PV-182 | 25 mm/25 m | 180 mm | valkoinen |
| 2953677 | PV-182 | 25 mm/30 m | 180 mm | valkoinen |

Dimensions





Pivaset

| | | | | | | | |
|----------------|------|----------------------|------|---------------------------|------|----------|---------|
| DESIGNED | DATE | SCALE | 1:10 | DATE | 17.2 | ADDITION | VERSION |
| APPROVED | DATE | SCALE | 1:10 | DATE | 17.2 | ADDITION | VERSION |
| | | TOLERANCE RANGE: | | PV-182 PV-EN-22792-1 m | | | |
| | | VERTICAL: | | 1.0570 (S355J2G3) | | | |
| DRAWING NUMBER | | PV-182 | | | | | |
| DRAWING NUMBER | | Pikappalopostikaappi | | | | | |
| ADDITION | | A3 | | | | | |

No part of this document may be reproduced or distributed in any form or by any means, or stored in database, without written permission of owner.